

# Display Manager™

Comprehensive configuration and management of the video wall is controlled through the IP2 Image Processor's Display Manager application. Display Manager is accessible on-site or remotely via a Web browser.

Display Manager provides end users with the ability to setup, configure, and optimally display content on a Laser Phosphor Display (LPD) video wall considering factors such as input video characteristics, ambient lighting conditions, as well as viewing distances.

Apart from a Web browser, a subset of the Display Manager's features can also be accessed through the External Control Interface (ECI). The ECI can be connected via a standard RS-232 serial interface, an Ethernet interface (Internet Protocol), or both.

Display Manager works seamlessly with various third-party upstream video wall controllers. Once the Display Manager maps one or more IP2s to a video wall, an upstream video wall controller simply needs to break up the pixel canvas and send the appropriate section of video to each IP2 which in turn, will send the appropriate video signal to each tile on the video wall.

For more information, contact us at [sales@prysm.com](mailto:sales@prysm.com), 1.877.99.PRYSM or +1.408.586.1100.

## Features

The Web-based graphical user interface of the Display Manager is very versatile and provides the following options to manage a video wall:

### Dashboard

- ▶ Power Status
- ▶ Input Select
- ▶ Genlock Status
- ▶ High Speed Link Cable Status
- ▶ System Video Format
- ▶ Tile Type, Mode, Resolution
- ▶ Custom Branding
- ▶ User Name
- ▶ Logout

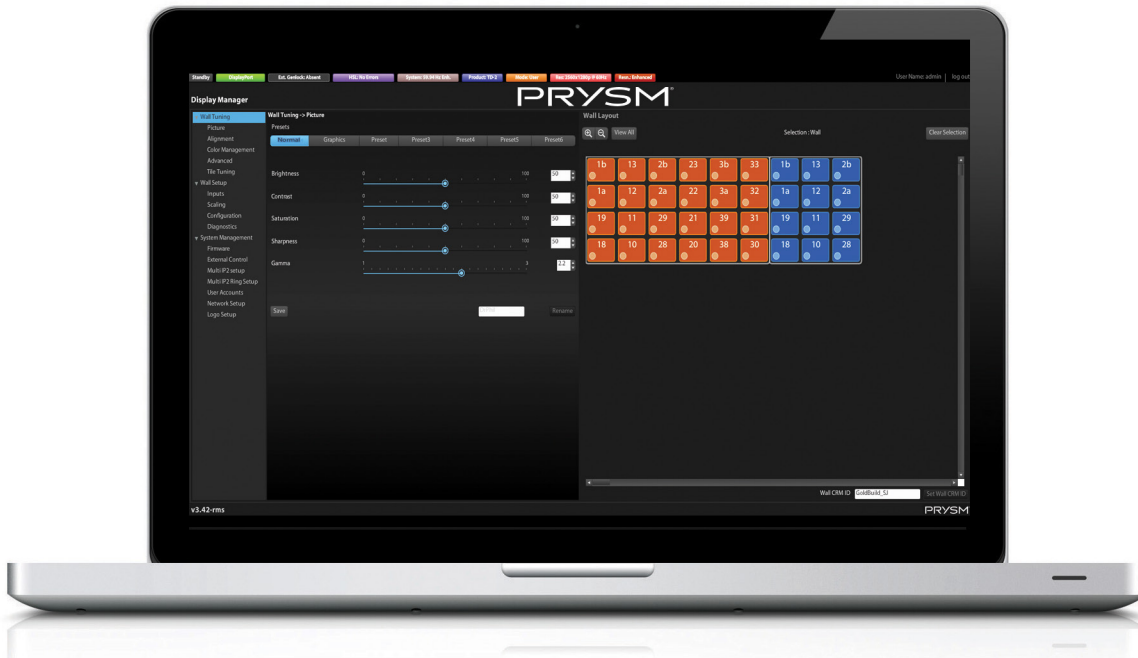
### Power States

- ▶ Off
- ▶ On
- ▶ Standby

### Usability

- ▶ In-line Help
- ▶ Automatic Masking of Inactive Controls
- ▶ Zoom View

...cont'd on reverse



## Features cont'd

### Wall Tuning

- ▶ Standard Picture Controls <sup>1</sup>
  - Brightness
  - Contrast
  - Saturation
  - Sharpness
  - Gamma
- ▶ Color Management
  - Picture Uniformity
  - Whitepoint Selection
  - Hue Controls
- ▶ Advanced Controls
  - Dynamic Brightness Control (DBC)
  - Noise Reduction (NR)
  - Compression Artifact Reduction (CAR)
  - Seam Blend
- ▶ Tile Tuning

### Wall Setup

- ▶ Inputs
  - Input Video Source
    - › Auto, HDMI, DVI, DisplayPort
  - Video System
    - › PAL, 59.94 Hz Standard mode, 50 Hz or 59.94 Hz Enhanced
  - Sync Mode
    - › Genlock, V-Sync, Freerun, Source-sync
  - Time to Semi-Standby
    - › 5 min to Never
- ▶ Image Scaling
  - Wall Input
    - › Direct connection or video splitter
  - Wall Output
    - › Display 1:1, Fit to wall extents, Preserve aspect ratio, Preformatted content

### Configuration

- ▶ IP2 Configuration
  - Load, Generate, Save
- ▶ IP2 settings
  - Load, Swap Tiles, Launch Installer
- ▶ Cables
  - Short or Long cables
- ▶ IP2 Label

### Diagnostics

- ▶ Test Patterns
- ▶ Tile Status

### System Management

- ▶ Update Firmware
- ▶ Firmware Version
- ▶ External Control Interface
  - RS-232
  - Ethernet
  - RS-232 and Ethernet
- ▶ IP2 Setup
  - Multi-IP2
  - Multi-IP2 Ring
- ▶ Account Management
  - Add User
  - Update User
  - Delete User
- ▶ Network Management
  - Dynamic (DHCP) IP Addressing
  - Static IP Addressing
- ▶ Custom Branding
  - Add Logo
  - Remove Logo

### External Control Interface (RS-232)

- ▶ Power State
- ▶ Brightness
- ▶ Contrast
- ▶ Saturation
- ▶ Sharpness
- ▶ Gamma
- ▶ Input
  - Auto
  - HDMI
  - DVI
  - DisplayPort
- ▶ Uniformity
  - Off
  - On
  - Color Uniformity
- ▶ White Point
- ▶ TV
  - PAL
  - NTSC
  - 59.94 Hz
- ▶ Video System
  - Genlock
  - V-Sync
  - Freerun
  - Source-Sync
  - Test Patterns

### Supported Web Browsers

- ▶ Microsoft Internet Explorer
- ▶ Google Chrome
- ▶ Mozilla Firefox
- ▶ Opera

<sup>1</sup> Standard picture controls are preset and can be customized, saved, and recalled.

#### Disclaimer:

The information contained herein is subject to change without notice. The only warranties for Prysm products and services are set forth in the express warranty statements accompanying the applicable customer agreement. Nothing herein should be construed as constituting an additional warranty. This document is provided solely for general informational purposes. Prysm shall not be liable for technical or editorial errors or omissions contained herein. Video wall display characteristics may vary from the tile display characteristics specified herein based upon factors including, but not limited to, the size of the video wall and display configuration settings. All trademarks mentioned are the property of their respective owners.