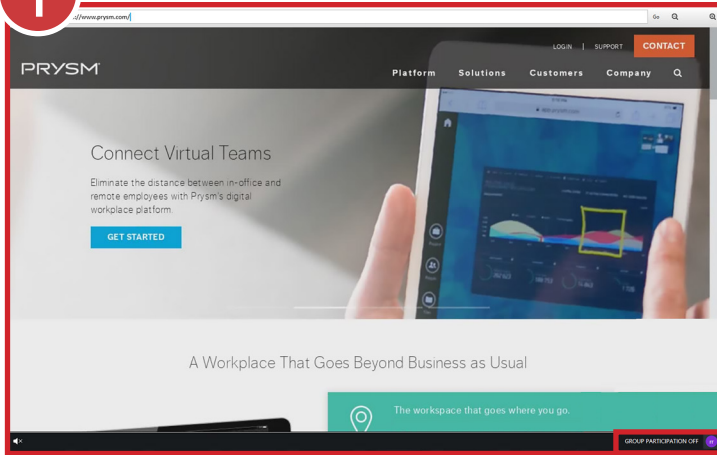


## Co-browser Basics

### 1 Adding a Co-browser Asset



1 To add a Co-browser asset, from the Touch Menu, select **Web Browser > Co-browser**.

The other Web Browser options are Standard Browsers.

A Co-browser is a web browser with the **Group Participation** toggle and **Presenter Icon** at the bottom.

Co-browsers allow users across all Prysm platforms to collaborate interactively through a web browser.

### 2 Co-browser Controls



**Group Participation ON** allows participants to interact with the Presenter's personal account



**Presenter Icon** shows who controls the Co-browser

2 The Presenter browses or signs into web sites. Other participants see the same pages in real time, even in the Presenter's personal accounts.

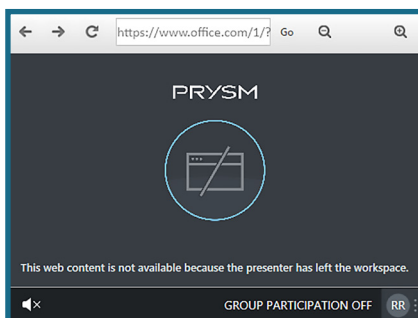
Co-browser Presenters can:

- Share web sites accessed with their personal credentials
- Control group participation
- Save sign in information to Co-browsers

### 3 Sign In Security



**When Presenter is done collaborating with participants, turn OFF for security...**



**...Participants then see this message in Co-browser**

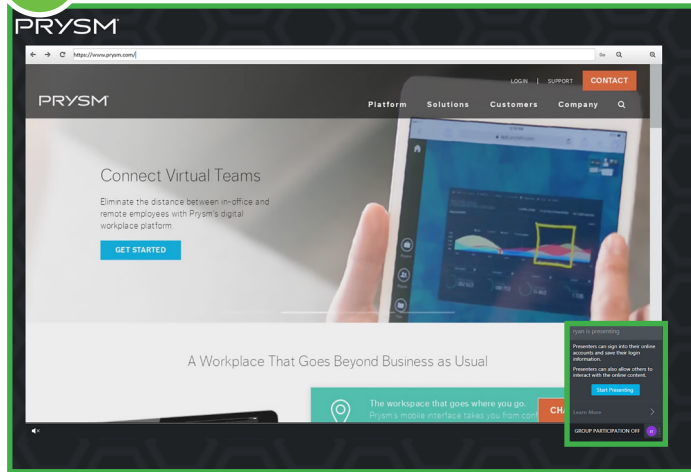
3 Co-browsers save the Presenters' sign in information. When Presenters access that site again in a Co-browser, in any of their projects, they don't have to enter sign in information again.

If another participant becomes Presenter for your Co-browser, the new Presenter can't access any accounts to which you have signed in. When you become Presenter again for the Co-browser, you can access your accounts without having to enter your sign in information again.

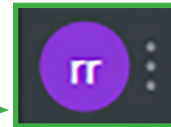
Prysm recommends that you exit the workspace when you leave a room.

## Co-browser Extras

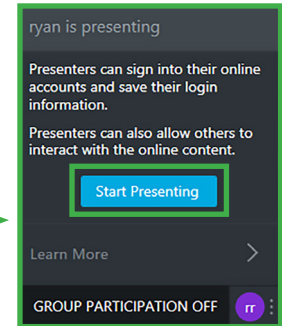
### 4 Switching Presenters



4 Other participants can click the **Presenter Icon** and click **Start Presenting** to become the Presenter, sign into their own accounts, and turn Group Participation on and off.



Tap Presenter icon to switch presenters

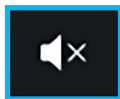


Tap Start Presenting

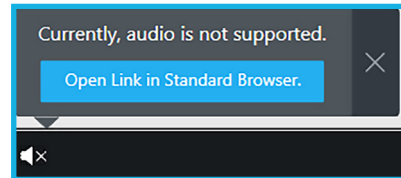
### 5 Opening a Standard Browser for Audio



Tap Audio icon

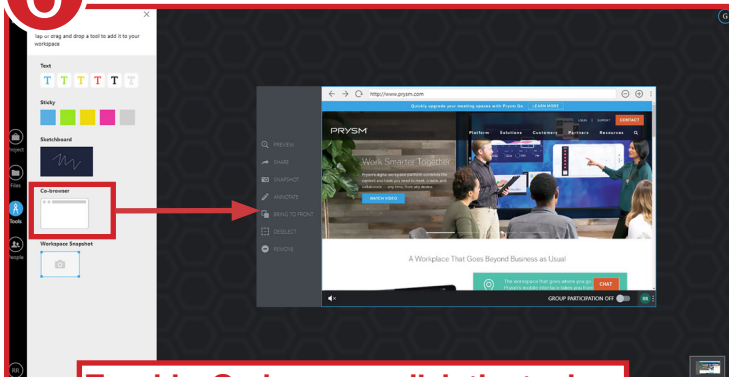


5 If you need audio in a browser, open a Standard Browser from the Touch Menu, or click the Audio icon in a Co-browser to open a Standard Browser. At this time, the Co-browser doesn't support audio.



Tap Open Link in Standard Browser

### 6 Adding a Co-browser to Prysm for Web



To add a Co-browser, click the tool or drag it onto the workspace

6 Prysm for web users can add Co-browsers to a workspace to have full browsing capabilities, including acting as Presenter and turning Group Participation on and off.